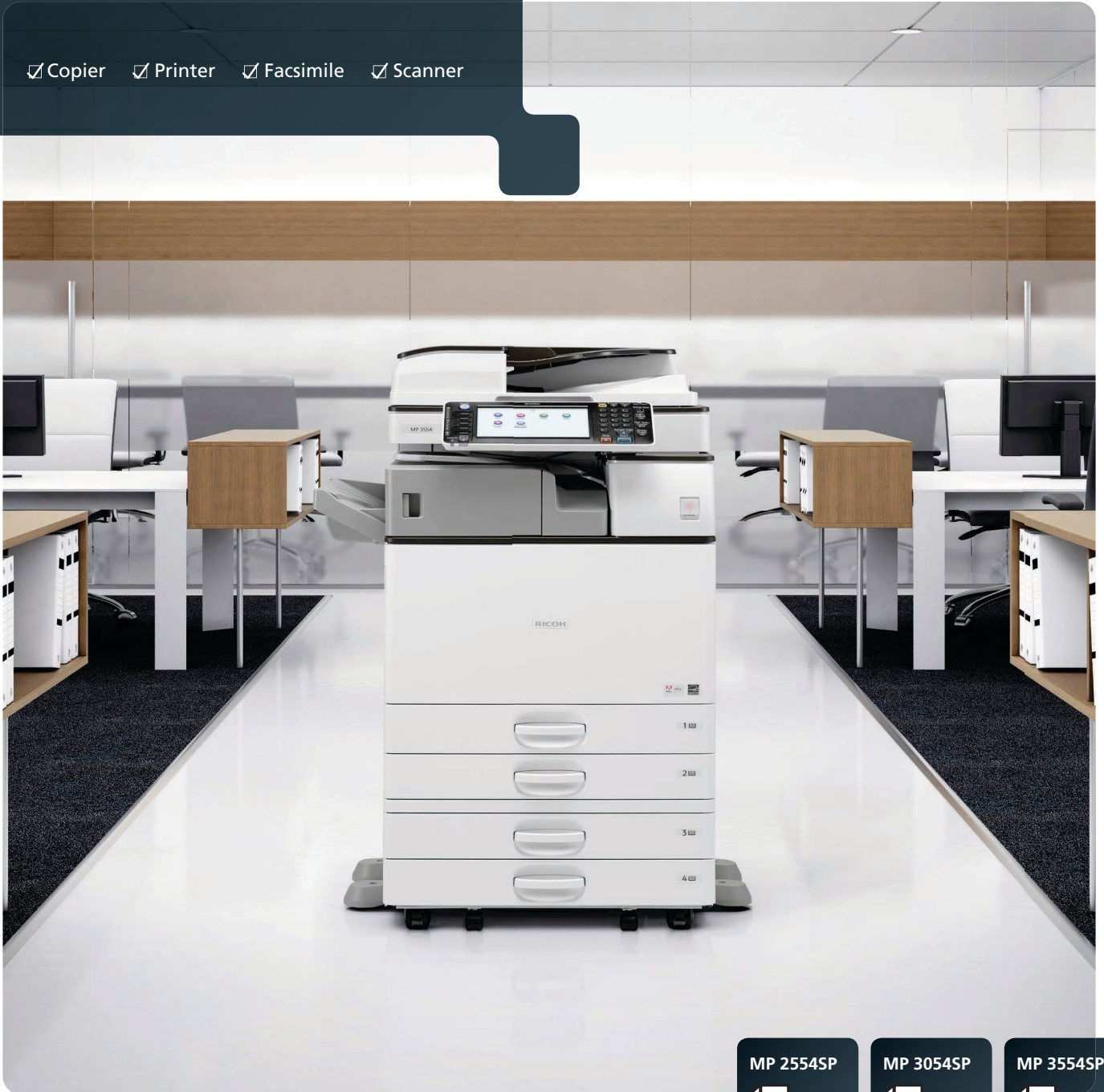


Multifunction B&W

RICOH MP 2554SP MP 3054SP MP 3554SP

✓ Copier ✓ Printer ✓ Facsimile ✓ Scanner

RICOH
imagine. change.



MP 2554SP

25
ppm monochrome

MP 3054SP

30
ppm monochrome

MP 3554SP

35
ppm monochrome

Expand your business with customised convenience

Who says staying ahead of the competition is difficult? It's easy when you can give your customers the information they need — in multiple formats and multiple ways — quickly, with a host of standard security features. Perform everyday office tasks, including advanced printing, copying, faxing and colour scanning, from the versatile RICOH® MP 2554SP/MP 3054SP/MP 3554SP. Are projects piling up? Save time with preset shortcuts to frequently used document tasks. You use your smartphone every day. Why not use it to print documents from wherever you are? You can even monitor user activity and energy consumption remotely, and make strategic changes to simplify work and reduce costs.

- Produce up to 35 black-and-white prints/copies per minute
- Envelope your ideas with standard envelope feeding from Tray 2, Bypass & Optional Trays
- Print or scan with your phone or tablet with the Ricoh Smart Device Print&Scan app
- Scan to searchable PDF's with the Optical Character Recognition (OCR) option
- Minimise operating costs with energy-saving efficiency
- Add Internal Finishers without increasing footprint
- Print on up to 300 g/m², duplex up to 256 g/m²

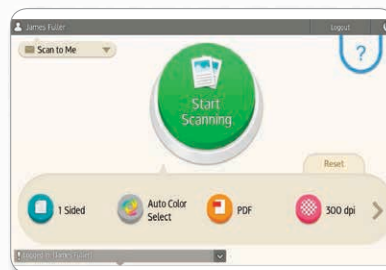


Move from job to job effortlessly

Fully featured with advanced tools to make your workday easier

Perform more types of tasks

Information drives business. You rely on it to make smarter decisions. But what happens when you need to share it with others? How quickly can you get it to them? And is it in the format — either paper or digital — that they prefer? Whether you're printing, copying, scanning or faxing, the compact and affordable Ricoh MP 2554SP/MP 3054SP/MP 3554SP helps you produce and share information quickly. Take advantage of intuitive one-touch controls, and move on to the next task — whatever it turns out to be — with ease.



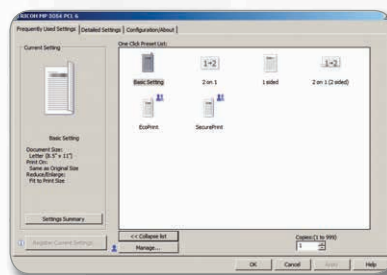
Share information faster

Take too much time on one job, and the next one may not get done. Fortunately, you can easily transition between jobs with the Ricoh MP 2554SP/MP 3054SP/MP 3554SP. Recovery time from sleep mode is less than 5 seconds, so you don't have to stand around waiting when you need to send documents quickly. Print up to 35 black-and-white pages per minute on a wide range of media and handle almost any job. You can also scan up to 80 colour or black-and-white images per minute with minimal manual intervention using the 100-Sheet Automatic Reversing Document Feeder (ARDF).



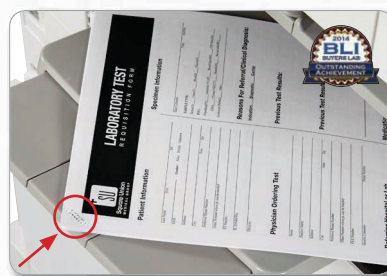
Manage and boost workgroup output

Today's fast paced offices need to work more efficiently. Your workgroup can use the Ricoh MP 2554SP/MP 3054SP/MP 3554SP — featuring a powerful 533 MHz processor, 2 GB RAM and a 320 GB HDD — to run multiple jobs from multiple users simultaneously, without interruption. You can set quotas or limit output for specific users to encourage faster, more responsible printing. Take advantage of the icon-driven, one-click preset PCL6 user interface to print crisp output up to 1200 dpi in fewer steps.



Access everything you need with ease

Perform daily tasks more efficiently with the intuitive, simple-to-use interface. Spending too much time re-loading paper? Add optional paper trays to increase paper capacity up to 4,700 sheets for longer, uninterrupted runs. You can even print on thicker stocks up to A3 without missing a beat. Plus, you can choose from several automated finishers, including the Stapleless Finisher, which received the Summer 2014 BLI Outstanding Achievement Award for Innovation. This 250-Sheet Internal Stapleless Finisher binds up to five sheets of paper with no staples. This unique stapleless finishing technology helps to lower supply costs and expedites future paper recycling and/or shredding needs.



Keep productivity high in any network environment

Use familiar technology to navigate key functions quickly

With the Ricoh MP 2554SP/MP 3054SP/MP 3554SP, you can print, copy, scan and fax documents and move on to your next project just as quickly. Intuitive drag-and-drop, pinch-and-flick and swipe scrolling simplify routine actions and minimise extraneous choices. It's available via the optional 10.1" Wide Super VGA Smart Operation Panel, which simplifies the choices for the most frequently used functions for Copy, Scanner and Fax. For workgroups requiring enhanced feature functionality, it is easy to switch between the Quick User Interface functions and Ricoh's traditional user interface.



Go mobile

You can also leverage the powerful features and functionality of the Ricoh MP 2554SP/MP 3054SP/MP 3554SP directly from your smartphone or tablet through the Ricoh Smart Device Connector app. This versatile technology helps you easily connect an NFC-enabled Smart Device to the optional Smart Operation Panel. Users simply touch their Smart Device to the NFC (Near Field Communication) tag on the Smart Operation Panel or scan the QR Code to automatically connect to the MFP allowing copy, print, scan and fax capability directly from their smart device.



Ricoh Smart Device Print&Scan app

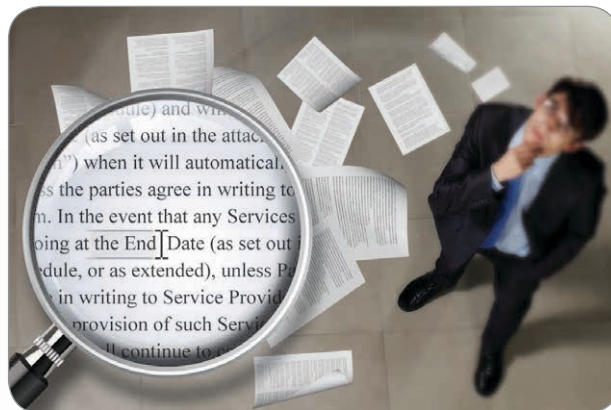
Unlike the Ricoh Smart Device Connector app, this app doesn't require a Smart Operation Panel and it works with Ricoh printers & MFPs. Available for both Apple and Android devices, the free Ricoh Smart Device Print&Scan features advanced printing settings you would normally see on a computer driver, such as paper size, orientation, duplexing, input tray and even stapling and password-protected printing. You can also scan straight to your mobile device and instantly upload your scan to your Dropbox or Google Drive accounts, as well as retrieve documents for printing, with many file formats supported.



We've made it easy to take control

Search scanned files with embedded OCR text

Ricoh continues to automate how you capture, retrieve and send data to simplify everyday tasks. The optional embedded OCR (Optical Character Recognition) scanning adds a transparent layer of text over the output PDF allowing you to retrieve documents by searching on your computer for specific words inside the PDF contents instead of guessing on the actual name of the file. The OCR unit also lets you auto remove blank pages while scanning.



Scan and share the way you want to

Reduce the amount of paper your organisation uses. Because digital documents can be shared in real time, you can work with others to develop strategies and ideas that can be implemented quickly. Whether images are in black-and-white or colour, or in PDF, TIFF or JPEG formats, you can get them to the right place via Scan-to-File/Folder/URL/FTP/Email. Compress the size of highly complex, graphics-intensive files and send them just as easily without compromising quality. You can also make scanning easier across your organisation with Distributed Scan Management (DSM). Use it to automate document tasks and to set user permissions, rules and delivery preferences to simplify how you manage information.



Send faxes more ways, more places

Manage fax workflow quickly and conveniently by adding optional faxing capabilities. Choose the method that works best for you, whether it's Internet Faxing, LAN faxing or over IP for faster delivery via Super G3 faxing. Using another connected device that doesn't have a fax board? No problem. With the Remote Fax Option, users can send and receive fax documents from any connected device in your fleet — even those without fax options — by sending it through the Ricoh MP 2554SP/MP 3054SP/MP 3554SP. This minimises the need for additional phone lines and fax boards.



Help meet today's business challenges with smart, secure multifunction performance

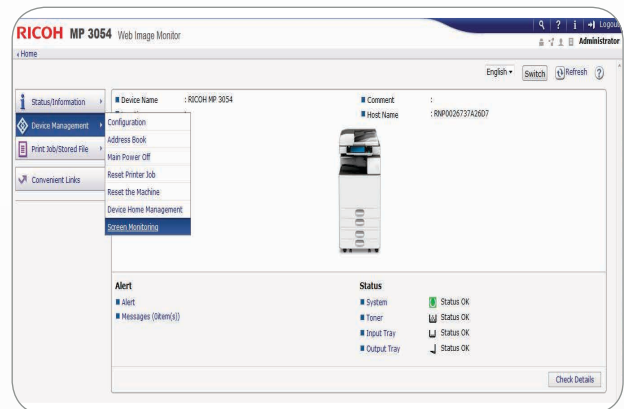
Protect your documents, and yourself

Every business takes risks daily. Some of them are avoidable. Advanced user authentication helps prevent unauthorised access to documents. Documents are stored at the device until an authorised ID card is swiped using the optional card reader or a passcode is entered at the MFP to release them. For added protection, you can use encrypted PDF transmission to scramble data on confidential PDFs or add watermarks to confidential documents that will appear when unauthorised users attempt to copy them. The DataOverwriteSecurity System (DOSS) automatically overwrites latent images and data on the hard drive to render them unreadable.



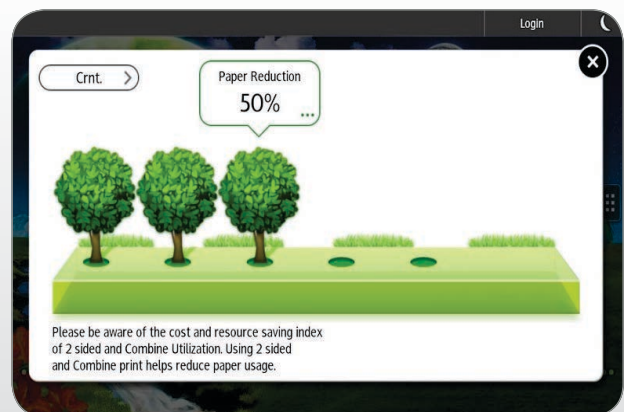
Manage and monitor remotely

With the Ricoh MP 2554SP/MP 3054SP/MP 3554SP, you can see how terms like “efficiency” and “productivity” fit into your workday. Use the intuitive administration controls to automate meter reads, access system settings, streamline firmware updates and more, right from the desktop. Get alerts when supplies are low or maintenance is needed. Monitor usage for specific users or workgroups. And, configure your entire fleet remotely from the easy-to-use, Web browser-based operation panel.



Minimise energy consumption and operating costs

Choose the Ricoh MP 2554SP/MP 3054SP/MP 3554SP for low cost-per-page and best in class typical electricity consumption (TEC) values to help support your budgetary needs and sustainability goals. With a shorter print/copy time from sleep mode, the Ricoh MP 2554SP/MP 3054SP/MP 3554SP keeps up with today's fast-paced business requirements. You can program the device to power on or off during specified times to conserve energy for even greater savings. Plus, the device meets EPEAT® Gold criteria — a global environmental rating system for electronic products — and is certified with the latest ENERGY STAR™ specifications.



Eco-Friendly Indicator Screen as shown on the Smart Operation Panel.

Streamline document management tasks in small offices and workgroups



Ricoh MP 2554SP shown with optional BN3110 One-Bin Tray, PB3220 Paper Feed Unit, RT3030 1,500-Sheet Side Large Capacity Tray, Bridge Unit BU3070 and 1,000-Sheet SR3150 Booklet Finisher.

- 1** Navigate from job to job easily via the standard, full-colour, 9" tiltable LCD control panel featuring USB & SD card slots and a customisable home screen to link to commonly performed jobs
- 2** Use the standard 100-Sheet Automatic Reversing Document Feeder (ARDF) to efficiently handle one- and two-sided originals for copying, scanning and faxing
- 3** The MP 2554SP/MP 3054SP/MP 3554SP comes standard with 2 x 550-sheet paper trays for longer, uninterrupted runs
- 4** A standard 100-Sheet Bypass Tray accommodates a wide range of paper sizes and types, including poster printing
- 5** Use the optional 2 x 550-Sheet Paper Trays (shown) for multiple paper sources on demand. Other options include a 1 x 550-Sheet Paper Tray, 2,000-Sheet Tandem Large Capacity Tray, 1,500-Sheet Side Large Capacity Tray (shown) and Console
- 6** Produce professional documents and minimise outsourcing. The optional 1,000-Sheet Booklet Finisher (shown) provides three destinations for output, and can be used to produce paginated, saddle-stitched, punched and folded booklets. Design your own complete document production solution with other optional finishers including a 1,000-Sheet Finisher, 500-Sheet Internal Finisher and 250-Sheet Stapless Finisher
- 7** The optional 125-Sheet One-Bin Tray (shown) and 250-Sheet Internal Shift-Sort Tray can separate output and simplify document retrieval

RICOH MP 2554SP / MP 3054SP / MP 3554SP SERIES

MAIN SPECIFICATIONS

GENERAL

Warm-up time:	14.0 seconds
First output speed:	4.6/4.6/4.3 seconds
Continuous output speed:	25/30/35 pages per minute
Memory:	2 GB (Maximum)
HDD:	320 GB
Dimensions (W x D x H):	587 x 680 x 913 (with ARDF)
Weight:	68.5 kg (with ARDF), 60 kg (without ARDF)
Power source:	220 - 240 V, 50/60 Hz

COPIER

Copying process:	Laser beam scanning & electro photographic printing
Multiple copying:	Up to 999 copies
Resolution:	600 dpi
Zoom:	From 25% to 400% in 1% step

PRINTER

Printer language:	Standard: PCL5e, PCL6, Adobe® PDF Direct Option: Adobe® PostScript® 3™, IPDS, XPS
Print resolution:	1,200 x 1,200 dpi
Interface:	Standard: USB 2.0, SD slot, Ethernet 10 base-T/100 Base-TX, Ethernet 1000 Base-T Option: Bi-directional IEEE 1284/ECP, Wireless LAN (IEEE 802.11a/b/g/n), Bluetooth
Network protocol:	TCP/IP (IP v4, IP v6), IPX/SPX (Option)
Windows® environments:	Windows® XP, Windows® Vista, Windows® 7, Windows® 8, Windows® Server 2003, Windows® Server 2008, Windows® Server 2008R2, Windows® Server 2012
Mac OS environments:	Macintosh OS X v10.56 or later
UNIX environments:	UNIX Sun® Solaris: 2.9, 2.10 HP-UX: 11.x, 11i v2, 11i v3 SCO OpenServer: 5.0.7, 6.0 RedHat® Linux Enterprise: v4, v5, v6 IBM® AIX: v5L, v5.3, v6.1, v7.1
Novell® Netware® environments:	v6.5 or later (Optional)
SAP® R/3® environments:	SAP® R/3®

SCANNER

Scanning speed:	Full Colour or B&W: Max. 80 ppm
Resolution:	600 dpi, 1200 dpi (TWAIN)
File Format:	TIFF, JPEG, PDF, Encryption PDF, High Compression PDF, PDF-A
Bundled drivers:	Network TWAIN
Scan to:	E-mail, Folder, USB/SD, NCP (Optional)

FAX (OPTION)

Circuit:	PSTN, PBX
Compatibility:	ITU-T (CCITT) G3
Resolution:	8 x 3.85 line/mm, 200 x 100 dpi 8 x 7.7 line/mm, 200 x 200 dpi 8 x 15.4 line/mm, 16x 15.4 line/mm 400 x 400 dpi (Optional)
Transmission speed:	G3: Approx. 3 second(s) (200 x 100 dpi, JBIG) Approx. 2 second(s) (200 x 100 dpi)
Modem speed:	Maximum: 33.6 Kbps
Memory capacity:	Standard: 4 MB Maximum: 60 MB

PAPER HANDLING

Recommended paper size:	A3, A4, A5, A6, B4, B5, B6
Paper input capacity:	Standard: 1,200 sheets Maximum: 4,700 sheets
Paper output capacity:	Standard: 500 sheets Maximum: 3,625 sheets
Paper weight:	Standard & Optional paper tray(s): 60 - 300 g/m ² Bypass tray: 52 - 300 g/m ²
Duplex unit:	52 - 256 g/m ²

ECOLOGY

Power consumption:	Maximum: 1,600 W Ready mode: 54.6 W Sleep mode: 0.49 W TEC (Typical Electricity Consumption): MP 2054SP: 858 W/h MP 3054SP: 1,092 W/h MP 3554SP: 1,321 W/h
---------------------------	--

SOFTWARE (OPTION)

GlobalScan NX, Device Manager NX, Enhanced Locked Printed NX, Streamline NX, Card Authentication Package

OPTIONS

ADF handle, Platen Cover, ARDF, 1 x 550-sheet paper tray, 2 x 550-sheet paper tray, Tandem LCIT, Caster table, Side LCIT, One-bin tray, 1,000-sheets finisher, 1,000-sheets booklet finisher, 500-sheets internal finisher, Stapleless stapler internet finisher, Shift tray, Side Tray, Bridge unit, Punch kits for finisher, Network, File format converter, Adobe® PostScript® 3™ option, IPDS, XPS print option, Copy data security unit, Wireless LAN (IEEE 802.11a/b/g/n), IEEE 1284, Bluetooth, Counter interface, Smart card reader cover, OCR unit, Fax option, G3 interface unit, Fax connection unit, Fax memory, Console, USB device server option

For availability of models, options and software, please consult your local Ricoh supplier.

RICOH
imagine. change.

